

Post 'N' Levels Education Pathways

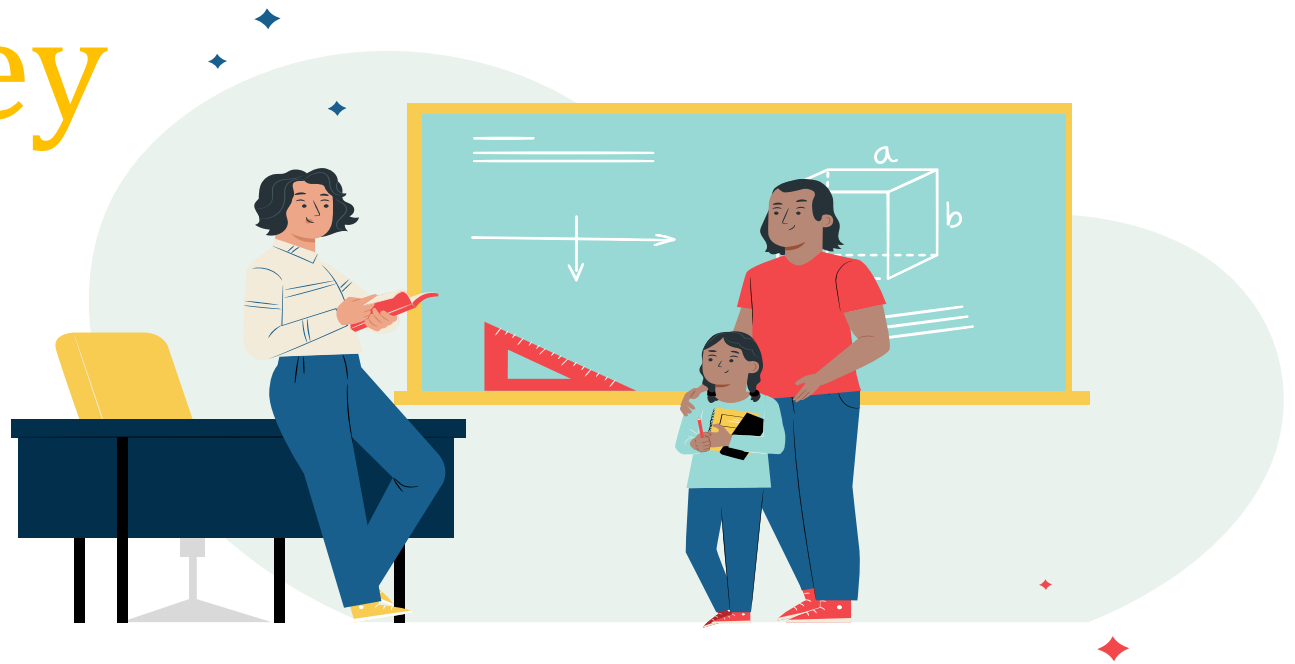
Briefing for Parents from Gan Eng Seng School
22 April 2022

By Ms Gina

Education & Career Guidance (ECG) Counsellor



Supporting Your Child's ECG Journey



Questions Our Child May Have ...

Subject Combination

Which Subject Combination should I take?



I Don't Know

I don't know what I want to be yet, but I know I love Literature. How now?



Education Pathways / Choice of Course

Which Education Pathway / Course should I choose?



Career Aspiration

Do I know my career aspiration yet?



How can ECG help our Students ?

- To be aware of their interests, personality, skills and values
- Develop the dispositions of resilience, adaptability and lifelong learning so as to be able to navigate education and career pathways purposefully



Who am I?

- I need to understand myself better. The more I know, the better I will be at making informed choices



Where do I want to go?

- Many pathways are worth taking. I need to explore viable education and career options, set goals and make plans



How do I get there?

- There are no dead ends. I can make informed decisions and develop plans to pursue my aspirations through different routes.

*“As parents, we all want what is best
for our children...”*

*Within our own families,
we can all spend a bit more time
listening to our children’s thoughts
and feelings.*

*Let us walk alongside them as they
grow and
handle their new challenges. ”*



- Mr Chan Chun Sing, Minister for Education



Parents' Role in ECG...

Facilitator / Supporter

I see myself as a facilitator and supporter instead of the “director” of my children’s decisions

Appreciate them for who they are

I recognise that my children are unique with their own values, interests, strengths, personality and skills.

Belief in their growth

I believe that my children’s abilities can grow through dedication and hard work.

Appreciate all professions and contributions

I appreciate all professions and acknowledge their respective contributions to Singapore



Take a moment to reflect...

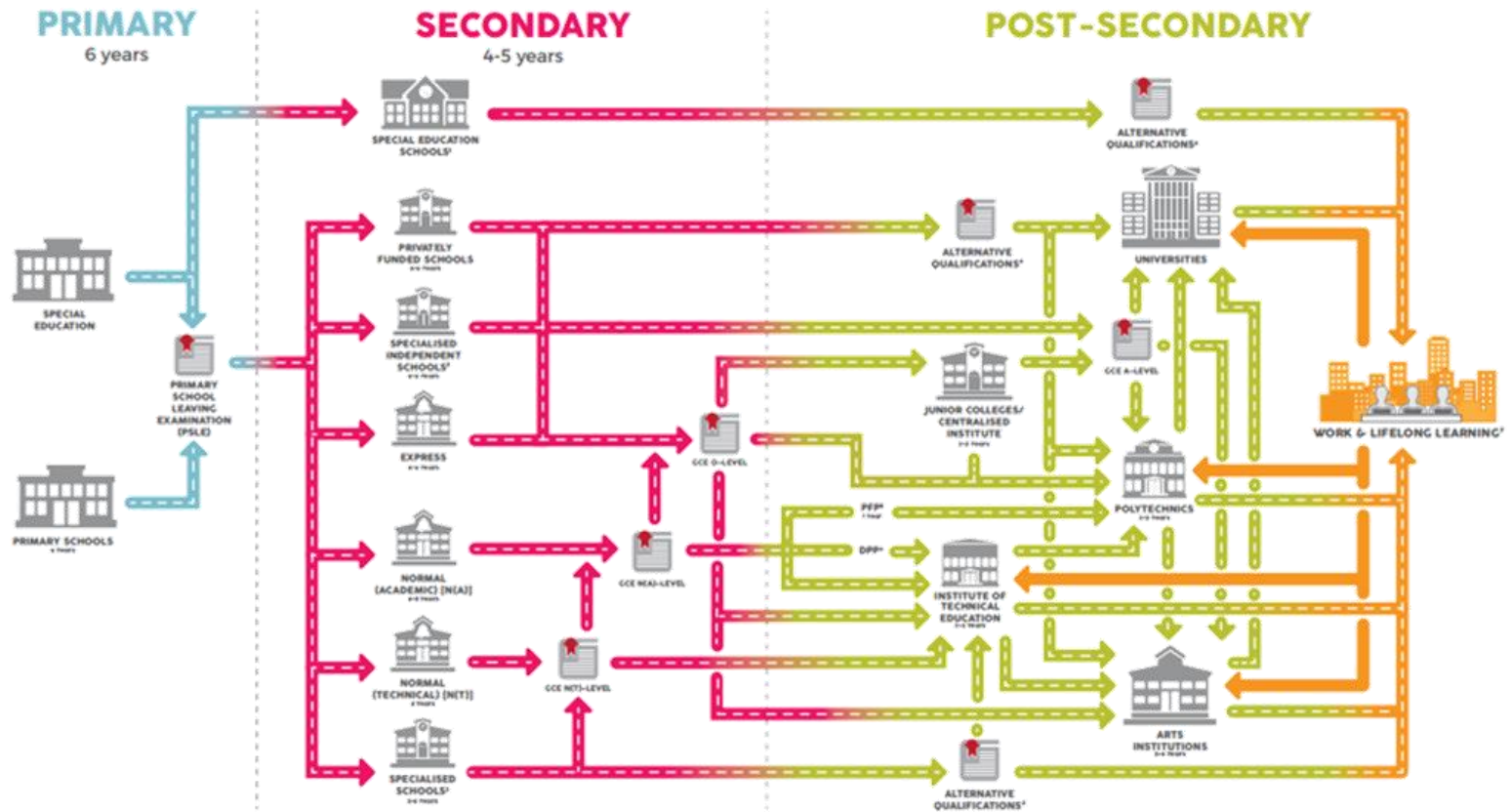
How well do we, as parents / guardians, know our children's education and career aspirations?

I have spoken to my child about his/her...

- Aspirations
- Interests
- Areas that she is good at / skilled in
- What she values / considers important in life
- Knowledge of current trends and developments in the world of work
- How she can prepare herself to be future-ready

Education Landscape Has Changed

Education Pathways Now Are Multiple



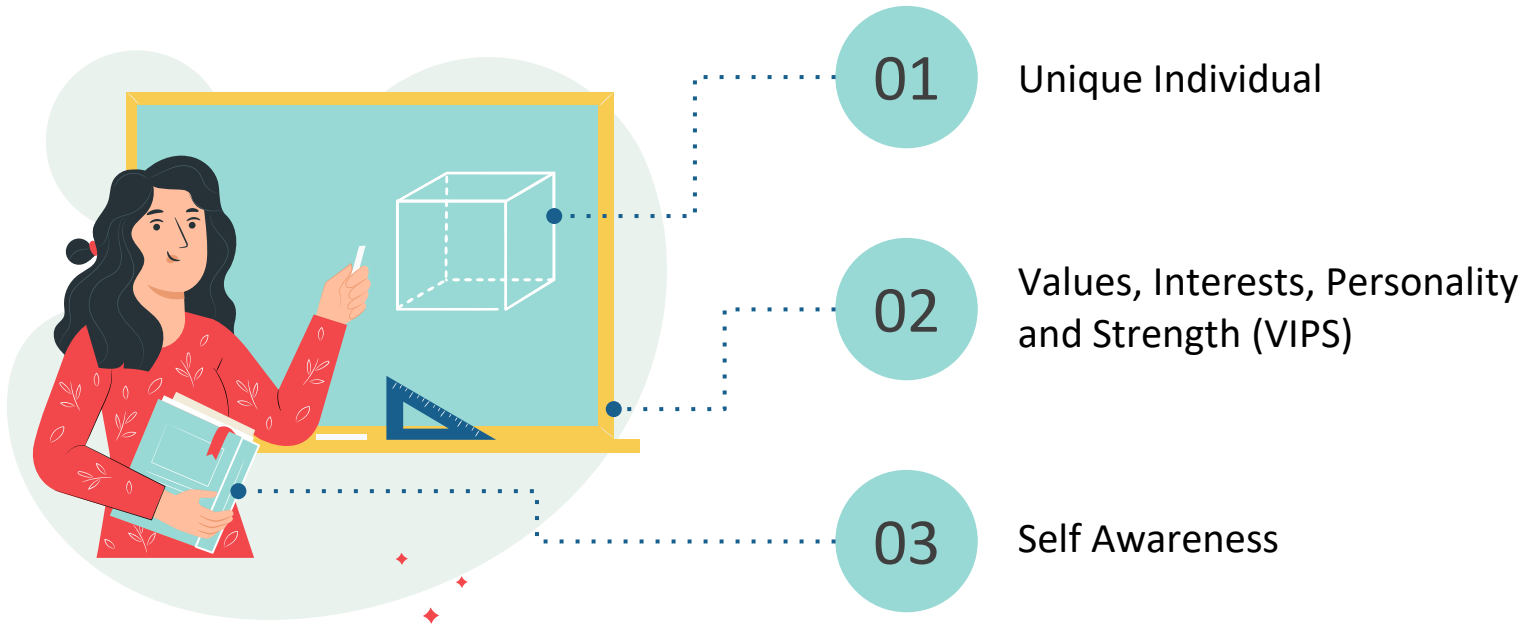
Supporting Our Child's ECG Journey



The 3 ECG Questions to Guide Our Child



Who am I?



My SkillsFuture (Student Portal)

go.gov.sg/mysfsec



*My*SKILLS*future*

About ▾ Know Yourself World of Work ▾ Education Guide



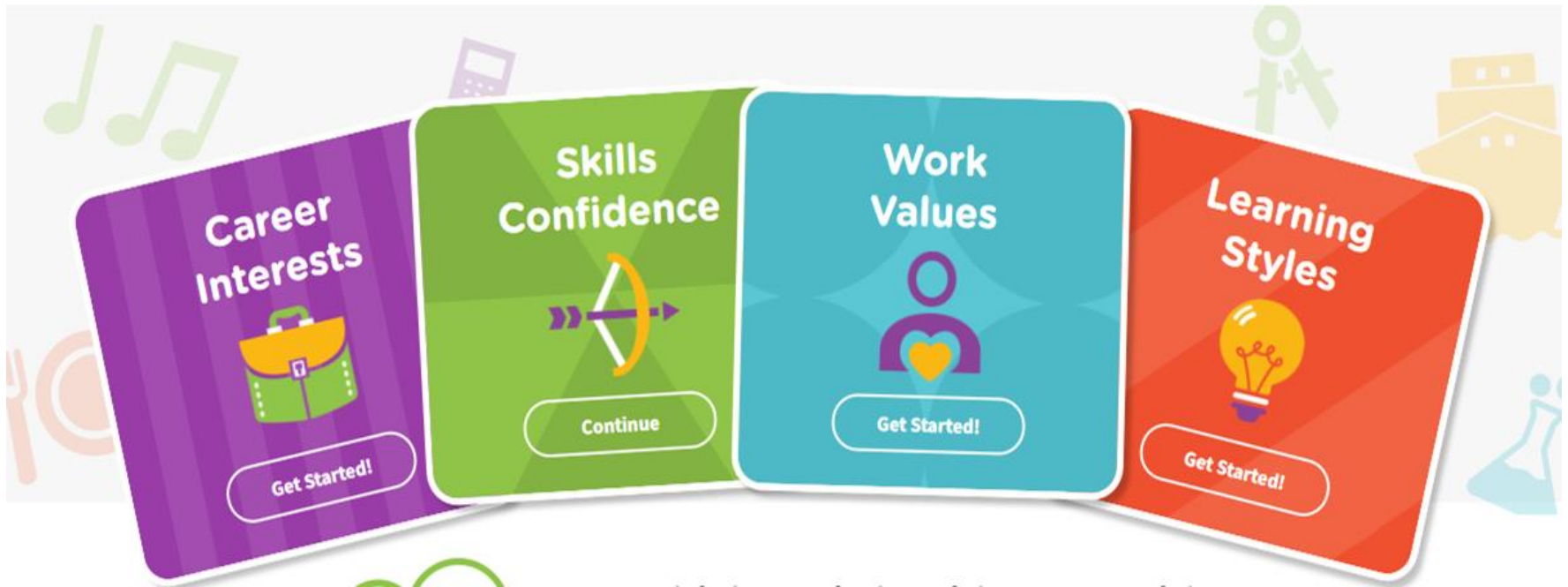
About MySkillsFuture

A one-stop portal that empowers you to embark on a journey of self-discovery and make informed education and career choices. Use the information and tools to explore various education and career pathways, and take charge of your future.



My SkillsFuture (Student Portal) Know Yourself

Discover more about your career interests, skills, work values, and learning styles. These tools are meant to facilitate self-awareness and exploration. You may use them as a guide to plan your education or career. Do speak to your parents, teachers and Education and Career Guidance counsellors if you need further advice.



Who am I?



Support them as they discover their VIPS

Encourage Reflection on Experiences

Connect Experiences

What is important to you? What motivates you?

What do you do in...?

What have you learned in <Subject> that will be useful for <Jobs you like>?

What are the issues you feel strongly about?

What do you like / dislike about...?

Is this an ability / skill / interest you want to develop further?

What do you enjoy doing?

How do you feel when...?

How would you describe yourself? How do others describe you?

What did you learn about...?

Would you like to do something like that in your future job? Why?

What are your strengths? What have people praised you for?

What did you discover about yourself through...?

Where Do I Want to Go?



Designer?
Physiotherapist?
Programmer?
Urban Farmer?

Which Occupation
should I choose?



Creating new AI?
Improve Mental Health?
Improve Sustainability?
Distribute Wealth?

Sense of Purpose / Challenge



Engineering?
Business?
Humanities?
Science / Arts?

Which Course should I
choose?

Where Do I Want to Go?



Start exploring areas of Interests

Which would be your top 3 aspirations? Why did you choose these?

Are there others you have in mind?

What are the skills / knowledge you wish to develop / gain?

Would you prefer something more academic or hands-on and work-oriented?

Prompt them to think Beyond

What do you want from this career?

What are the things important to you in a job?

What would be some other jobs related to this role / industry?

How can you find more information?

Let your Child be the Expert

That's a job I don't know much about, could you tell me more what it does?

How's the job prospect like? Could we find out and discuss more next time?

What does this course offer? What will you be learning / experiencing?

My SkillsFuture (Student Portal) World of Work

World of Work

Explore different job roles in different industries. A good understanding of the work requirements and environment can help you make better decisions.

Discover Now



Singapore Industry Landscape

Learn about the background, outlook and working environment of different industries, and the skills needed to work in each of these industries.

Find Out More



Job Information

Get insights into different job roles and the contribution to each industry in Singapore.

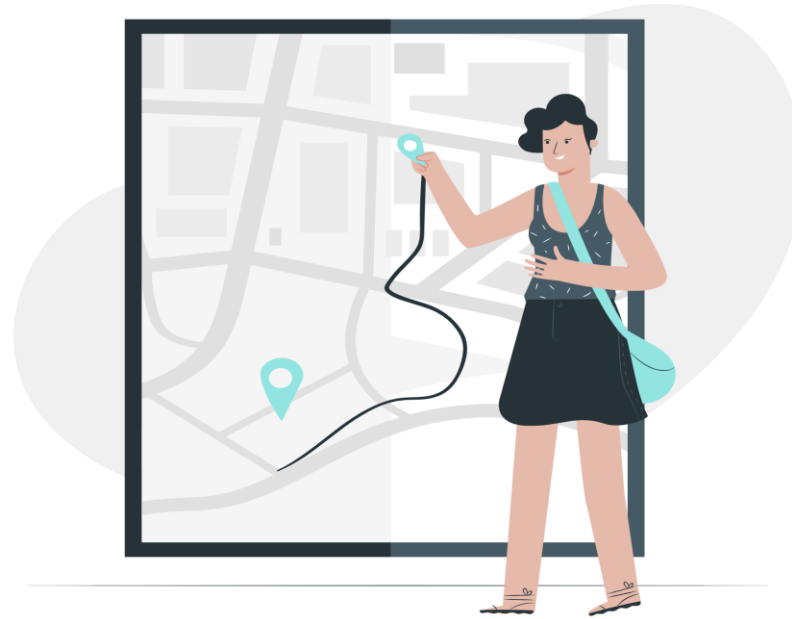
Find Out More

A screenshot of the My SkillsFuture World of Work interface. The page title is "Singapore Industry Landscape". A dropdown menu is open, showing a list of industries: Accounting, Advertising, Aerospace, Agriculture, Air Transport, Architecture, Arts, Entertainment and Recreation, Biopharmaceuticals Manufacturing, Built Environment, Consultancy, Creative Industries (Media), Design, Early Childhood Care and Education, Electronics, Energy and Chemicals, Environmental Services, Finance, Food Services, Healthcare, Hotel and Accommodation Services, Human Resource, Information and Communications Technology, Insurance, Landscape, Legal, Logistics, Marine and Offshore Engineering, Precision Engineering, Public Service (Education), Public Transport, Real Estate, Retail, Sea Transport, Security, Social Services, Spa Services, and Wholesale Trade. The background features a stylized cityscape with various buildings and icons representing different industries.

How Do I Get There?



Information to Gather



Points to Consider

Actions to Take

How do I Get There?



Get your child to be responsible for their own plan

Discuss with your child like they are adults

Which courses / qualifications do you think will lead you to this job?

What 'game plan'/plan do you have in mind to work towards this course/career?

Are there any prerequisites / minimum entry requirements to apply to these courses?

Are there ways you can experience what the job is like?

What steps can you take to work towards your goal?

Are there practical constraints you may face?
Eg. colour appreciation deficiency?

How can you better prepare yourself for this course / job?



What are the possible ways/admissions to get to your course?

Post 'N' Levels Education Landscape

Education Pathways for N(A) students

PFP

Polytechnic
Foundation
Programme

ELMAB3 \leq 12

Polytechnic
1 yr
Foundation
+
3 yrs
Diploma

DPP

Direct-Entry-
Scheme to
Polytechnic
Programme

ELMAB3 \leq 19

ITE
2 yrs + 10 wks
Higher Nitec



GPA \geq 2.5
or
GPA \geq 3.0

2-3 yrs
Diploma

NITEC
Courses

Best 4 N-level

ITE
2 yrs *Nitec*/3
years *Higher*
Nitec



ITE Higher
Nitec/
Poly/ Work
Study Diploma

Polytechnic Diploma
via Poly Foundation
Programme (PFP)

What is Poly Foundation Programme (PFP)?

- **One-Year** Foundation Programme that prepares well-performing Sec 4N(A) students for progression into respective polytechnic diploma courses.
- **Alternative** to Sec 5
- Students must **pass all PFP modules** in order to progress to their respective diploma courses.
- Offered by all **5 Polys**

Eligibility for PFP

- Raw ELMAB3 \leq 12 (excluding CCA bonus points)
- ELMAB3: English, Mathematics, Best 3 Subjects

Group 1 (Science/Engineering/ICT/Design etc)		Group 2 (Business/Media/Humanities etc)	
<u>Subject</u>	<u>Minimum Grade</u>	<u>Subject</u>	<u>Minimum Grade</u>
EL Syllabus A	3	EL Syllabus A	2
MA Syllabus A; A MA	3	MA Syllabus A; A MA	3
1 of the following: - D&T - F&N - Sc (Chem + Bio) - Sc (Physics + Bio) - Sc (Physics + Chem)	3	1 of the following: - Art - English Literature - History - Geography - Combined Humanities - POA	3
Any 2 other subjects	3	Any 2 other subjects	3

PFP Courses

Courses

For eligibility criteria of the polytechnic diploma courses# offered under Polytechnic Foundation Programme, [Click here for more information](#).
Before you make an application, please check out the medical requirements (e.g. colour vision, hearing, etc) of the courses offered by the polytechnic.

Course Group

- GROUP 1
- GROUP 2

Course Category

- Applied Sciences
- Built Environment
- Business & Management
- Engineering
- Health Sciences
- Humanities
- Information & Digital

Technologies

- Maritime Studies
- Media & Design

Polytechnic

↕ Poly	↕ Course Code	↕ Course Name	↕ Course Group	↕ Course Category
NYP	C33	Animation & Visual Effects	GROUP 1	Media & Design
TP	T20	Apparel Design & Merchandising	GROUP 1	Media & Design
RP	R25	Arts & Theatre Management	GROUP 2	Media & Design
NP	N88	Chinese Media & Communication	GROUP 2	Media & Design
TP	T59	Communication Design	GROUP 1	Media & Design
NP	N12	Design	GROUP 1	Media & Design
RP	R36	Design for User Experience	GROUP 1	Media & Design
SP	S35	Digital Animation	GROUP 1	Media & Design



<https://go.gov.sg/polypfp>

<https://pfp.polytechnic.edu.sg>

PFP Application Timeline (pending 2023 release of dates)

Application	12 January (2pm) to 17 January 2022 (4pm)
Posting Results	21 January 2022 (2pm)
Acceptance of Posting	21 January (2pm) to 25 January 2022 (4pm)
Appeal	21 January (2pm) to 25 January 2022 (4pm)
Outcome of Appeal	3 February 2022 (2pm)
Acceptance of Appeal Outcome	3 February (2pm) to 7 February 2022 (4pm)

Direct-Entry-Scheme to
Polytechnic Programme
(DPP)
ITE Higher NITEC

What is DPP?

- Prepares 4N(A) students for progression into selected polytechnic diploma courses via a **two-year *Higher Nitec*** programme at the ITE.
- **Alternative** to Sec 5.
- Students are **guaranteed** a place in the Polytechnic so long as they meet the requirements.

Eligibility for DPP

- Raw ELMAB3 (English, Math, Best 3 Subjects) ≤ 19
- Meet the minimum entry requirements



ELMAB3 <i>(EL, MA and Best of 3 Subjects)</i>	≤ 19 <i>(excluding CCA bonus points)</i>	
English Language	≤ 3 <i>(Business & Services Courses)</i>	≤ 4 <i>(Applied Sciences, Engineering and ICT courses)</i>
Mathematics	≤ 4	
Best Subject 1	≤ 5	
Best Subject 2	≤ 5	
Best Subject 3	≤ 5	

Requirements to progress directly to Polytechnics

Students who attain the required *Higher Nitec Grade Point Average (GPA)* score are guaranteed a place in a relevant Polytechnic Diploma course mapped to their Higher Nitec course.

<i>Higher Nitec Courses</i>	Progress to 1st Year in relevant Polytechnic Diploma Course*	Progress to 2nd Year in relevant Polytechnic Diploma course*
Applied Sciences [#]	ITE raw GPA ≥ <u>2.5 points</u> (excluding CCA bonus points [^])	N.A.
Engineering and Info-Communications Technology [#]	ITE raw GPA ≥ <u>2.5 points</u> (excluding CCA bonus points [^])	ITE raw GPA ≥ <u>3.5 points</u> (excluding CCA bonus points [^])
Business & Services	ITE raw GPA ≥ <u>3.0 points</u> (excluding CCA bonus points [^])	N.A.

DPP Mapping to Polytechnic

Higher Nitec DPP Course ^[2]	Mapped Polytechnic Courses for articulation from Higher Nitec DPP Course	Offered by	Minimum Qualifying GPA ^[3]	
			Year 1 Entry ^[4]	Year 2 Entry ^[5]
Business & Services				
Event Management	Integrated Events & Project Management	SP	3.0	-
	Event Management	TP	3.0	-
	Common Business Programme	TP	3.0	-
	Culinary & Catering Management	TP	3.0	-
	Hospitality & Tourism Management	TP	3.0	-
	Logistics & Operations Management	TP	3.0	-
Hospitality Operations	Marketing	TP	3.0	-
	Common Business Programme	NP	3.0	-
	Hotel & Leisure Facilities Management	NP	3.0	-
	Tourism & Resort Management	NP	3.0	-
	Accountancy & Finance	NYP	3.0	-
	Banking & Finance	NYP	3.0	-
	Business Management	NYP	3.0	-
	Common Business Programme	NYP	3.0	-
	Experiential Product & Interior Design	NYP	3.0	-
	Food & Beverage Business	NYP	3.0	-
	Hospitality & Tourism Management	NYP	3.0	-
	Mass Media Management	NYP	3.0	-
	Sport & Wellness Management	NYP	3.0	-
	Hotel & Hospitality Management	RP	3.0	-
	Restaurant Culinary Operations	RP	3.0	-
	Common Business Programme	SP	3.0	-
	Business	TP	3.0	-
	Common Business Programme	TP	3.0	-
	Culinary & Catering Management	TP	3.0	-
	Hospitality & Tourism Management	TP	3.0	-
Logistics & Operations Management	TP	3.0	-	
Marketing	TP	3.0	-	

DPP Higher NITEC Courses

2-Year Higher Nitec with 10 Weeks Preparatory Course

Applied Sciences

- *Higher Nitec in Chemical Technology*

Engineering

- *Higher Nitec in Civil & Structural Engineering Design*
- *Higher Nitec in Electrical Engineering*
- *Higher Nitec in Electronics Engineering*
- *Higher Nitec in Mechanical Engineering*
- *Higher Nitec in Mechatronics Engineering*

Info-Communications Technology

- *Higher Nitec in Business Information Systems*
- *Higher Nitec in Cyber & Network Security*
- *Higher Nitec in Games Art & Design*
- *Higher Nitec in IT Applications Development*
- *Higher Nitec in IT Systems & Networks*

Business & Services

- *Higher Nitec in Accounting*
- *Higher Nitec in Event Management*
- *Higher Nitec in Financial Services*
- *Higher Nitec in Hospitality Operations*
- *Higher Nitec in International Logistics*
- *Higher Nitec in Leisure & Travel Operations*
- *Higher Nitec in Service Management*

Posting to DPP is based on Merit

- Looking at previous year's cut-off points, a ELMAB3 score of 16 to 19 may not secure a DPP place



<https://go.gov.sg/polydpp>

2-Year Higher Nitec Courses	Course Code	College Code	2021 JIE 'H' ELMAB3
<i>Duration: 2¼ Years (10 weeks of preparatory course followed by 2 years Higher Nitec training)</i>			
APPLIED SCIENCES			
Chemical Technology ②	FPCHT	CE-SM	8
ENGINEERING			
Civil & Structural Engineering Design ②	FPCSE	CE-SM	10
Electrical Engineering ①②	FPELE	CE-SM	14
		CW-CK	14
Electronics Engineering ①②	FPECE	CC-AM	13
		CE-SM	15
		CW-CK	15
Mechanical Engineering ②	FPMEC	CC-AM	11
		CE-SM	14
		CW-CK	14
Mechatronics Engineering ①②	FPMCE	CC-AM	12
		CW-CK	14
INFO-COMMUNICATIONS TECHNOLOGY			
Business Information Systems ②	FPBIS	CE-SM	10
Cyber & Network Security ②	FPNST	CC-AM	9
		CE-SM	11
		CW-CK	11
Games Art & Design ②	FPGAD	CC-AM	9
IT Applications Development ②	FPIAD	CC-AM	9
		CE-SM	11
		CW-CK	11
IT Systems & Networks ②	FPISN	CC-AM	10
		CE-SM	11
		CW-CK	12

What to expect in a Polytechnic Education?

- The classes are more spread-out.
- There is more group work and assignments.
- There is a need for consistency and discipline to maintain the grades, as the results are calculated **cumulatively** over the three years.
- There is strong emphasis on practice-based learning.
- There is a larger emphasis on soft skills such as communication, presentation, problem-solving, creative thinking skills.
- The Diploma prepares you for the World of Work.

ITE Nitec/Higher Nitec

3 Years Higher Nitec Courses

S/N	3-Year <i>Higher Nitec</i> Course	Course Code	College Code
1	Accounting	HF3AC	CC-AM CE-SM CW-CK
2	Business Information Systems	HF3BI	CE-SM
3	Cyber & Network Security	HF3CN	CC-AM CE-SM CW-CK
4	Electronics Engineering	HF3EC	CC-AM CE-SM CW-CK
5	IT Applications Development	HF3IA	CC-AM CE-SM CW-CK
6	IT Systems & Networks	HF3IS	CC-AM CE-SM CW-CK
7	Security System Integration	HF3SI	CW-CK
8	Sport Management	HF3SM	CC-AM CE-SM CW-CK

FULL-TIME 2-Year Nitec Courses

- A 2-year NITEC programme at ITE for students with an aptitude for hands-on learning.
- Students can progress to Higher Nitec courses, Polytechnics, ITE Technical Diploma/ Work Study Diploma, subject to meeting GPA requirements.

Admission Pathways to NITEC

'N' Level Results
**based on best 4 GCE 'N' level subjects, including subject prerequisite and bonus points*

Early Admission Exercise (EAE)
**based on interest & passion, subject to interviews, aptitude tests and portfolio reviews*

ITE

N(A) students who secured ITE EAE offers will still be eligible for DPP and PFP.

Supporting your Child in ECG

Factors to consider

Explore the pathways

Personal Characteristics
(Who am I?)

What Suits your child (interests, strengths, learning style)

What's Realistic

Practicalities
(How to get there?)

Progression Opportunities
(Where do I want to go?)

My Education Plans

My Career Aspirations

Back up Plans

Tentative

Parents can support your Child's ECG journey.....

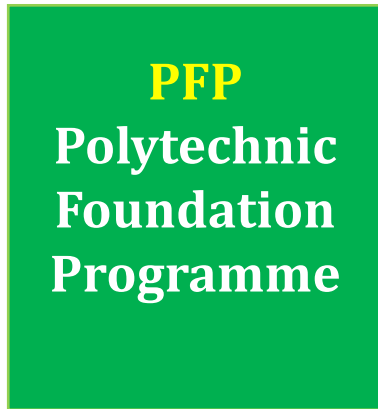
- *Keep an open mind & have a two-way conversation with your child.*
- *Give your child the space to communicate freely with you to understand him or her better*



<https://go.gov.sg/bysa6c>



Additional Resources for Parents



<https://go.gov.sg/polyfpf>

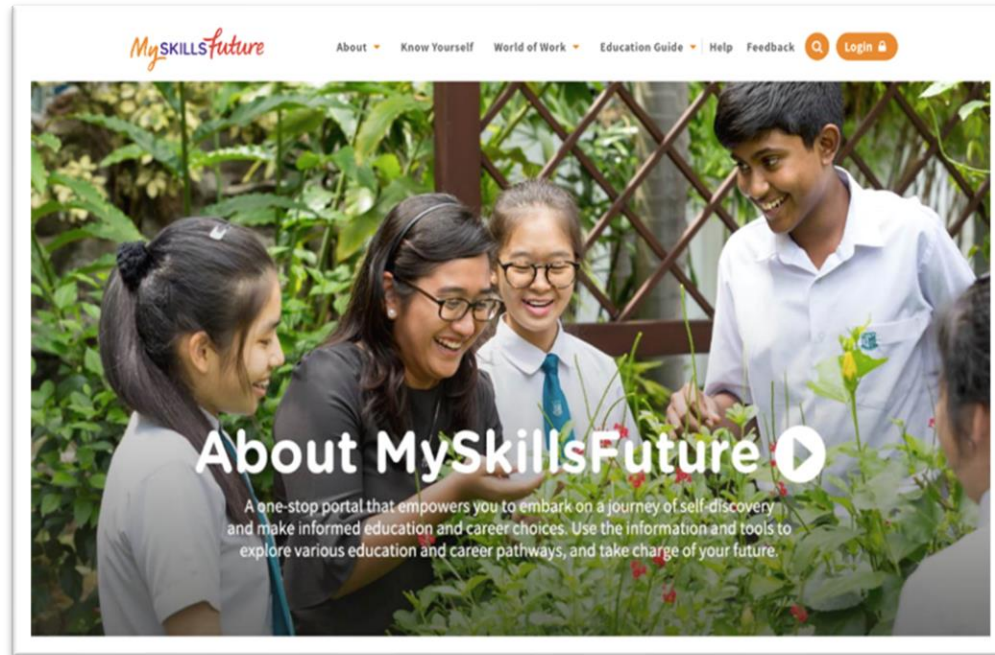


<https://go.gov.sg/polydpp>



<https://go.gov.sg/earlyadmission>

Useful Resources



<https://go.gov.sg/mysfsec>

Chat with your ECG Counsellor Ms Gina

Every Mon & Tues
Amphitheatre beside
Aroozoo Library
8am – 5.30pm



GAN ENG SENG SCHOOL
MS GINA
ECG COUNSELLOR

"WHO AM I?"

"WHERE AM I GOING?"

"HOW DO I GET THERE?"

#scan#chat
#msgina

Aroozoo Library
Monday & Tuesday
8.30am - 5.30pm
<https://go.gov.sg/chat-with-ms-gina>

The poster features a dark blue background with various educational icons: a graduation cap, a calendar, a folder, a globe, a trophy, and a stack of books. Three yellow banners with white text are positioned on the left side. A QR code is located in the lower-left quadrant. The bottom section contains event details and a URL, accompanied by small icons of people walking.